



Lehigh County

P E N N S Y L V A N I A

Welcome to Your Lehigh County Newsletter

From County Executive Phillips "Phil" Armstrong

To My Fellow Lehigh County Residents,

In this, my sixth year as your county executive, I would like to take a moment to reflect on the many people I have met along the way who help make Lehigh County the great place that it is.

First, I am lucky to work with some of the finest county employees in America, our heroic first responders, and the private businesses that make up our communities.

We have now navigated our way through the pandemic and landed squarely on the other side. Together, residents, businesses and government have found new ways to do many things. Zoom calls and telehealth are probably here to stay, but I think that some things are still best left as they have always been.

In this new age of paperless billing and remote everything, I hope that you save this hardcopy, printed newsletter and keep it handy as a reference guide for the many phone numbers and wealth of useful information that you can access all year and perhaps even longer.

As always, we partnered with local businesses to fund this year's newsletter to ensure not a dime comes out of our taxpayers' pockets.

This would not be possible without the help of the Hometown Press and my administration who so thoughtfully put together an inside look into our county government.

Contained in these few pages is a compendium of useful information, each of our county departments has given a report and information that they think will be useful.

Lehigh County government is the people's government, and this is our report to you.

Sincerely,

Until next time,

Phillips M. Armstrong
Your Lehigh County Executive



Government Center:
17 South 7th St. • Allentown, PA 18101
Courthouse:
455 Hamilton St. • Allentown, PA 18101
610-782-3000 • www.lehighcounty.org

Inside This Issue:

County Executive's Message.....	Front Cover	The Lehigh County Weekly Webcast.....	8
Where Are We Located?	3	"Who should I call?"	8
Lehigh County Board of Commissioners.....	3	Trexler Nature Preserve	14
Cedarbrook Senior Care and Rehab:	4	Farmland Preservation Update	14
Office of the Public Defender	6	Recycling and Hazardous Waste.....	16
Department of Corrections.....	6	Electronic Waste Recycling.....	18
Firefighter Tax Rebate	8		



Most awards. Top workplace. Join our award-winning team.



LVHN is proud to be Great Place to Work-Certified™, which means an overwhelming majority of our colleagues have a positive experience here. It also means LVHN is among the best places to work in the nation. Explore opportunities and apply at [LVHN.org/careers](https://www.lvhn.org/careers).



Where Are We Located?

Located in southeastern Pennsylvania in the area known as the Lehigh Valley, Lehigh County is a bustling and bolstering region full of rich farmlands, flourishing metropolises, and incredible residents.

We are positioned right in the corridor between Philadelphia and New York City with the City of Allentown as our county seat. Throughout our many roads and trails, we stay connected to other major destinations with easy access to such as I-78, Rt.145, Rt.22, Rt.309, Rt.33, or Rt.476 (Pennsylvania Turnpike). Regular commuters realize the ultimate convenience of our central location and transportation options, making Lehigh County a great place to live and work.

Lehigh County is also home to the Lehigh Valley International Airport, providing both commercial and private air facilities with non-stop flights to many U.S cities. Our impressive “super highway and cargo” networks and strategic geographic locations connect Lehigh County with the rest of the East Coast’s major markets, making our travel systems not only accessible but also admirable.

As a result, we are connected more than ever to the lifeforce of the Northeast with no intentions of slowing down or letting up.



Lehigh County Board of Commissioners

Stay updated on what is going on in Lehigh County. All Commissioner meetings are open to the public and can be viewed via zoom, or via recording.

Board of Commissioners Meetings:

Commissioner meetings are the 2nd and 4th Wednesdays (unless otherwise noted) and will begin at 7:30 p.m. The meetings will be held in the Public Hearing Room of the Lehigh County Government Center, 17 South Seventh Street, Allentown, PA.

Parking:

Parking is available in the Walnut and Church Streets Lot. The lot is located between 7th and 6th streets on Walnut Street. Traveling east on Walnut Street, turn right onto Church Street. The lot is accessible.

Attending meetings via Zoom:

For more information on our meetings and how to attend virtually, instructions can be found at www.lehighcounty.org under the Commissioners Department page.

Meeting Videos:

If you'd like to watch a recorded meeting, please visit www.lehighcounty.org under the Commissioners Department page, section link labeled Meeting Videos.



Board of Commissioners (Missing Commissioner Zakiya Smalls).

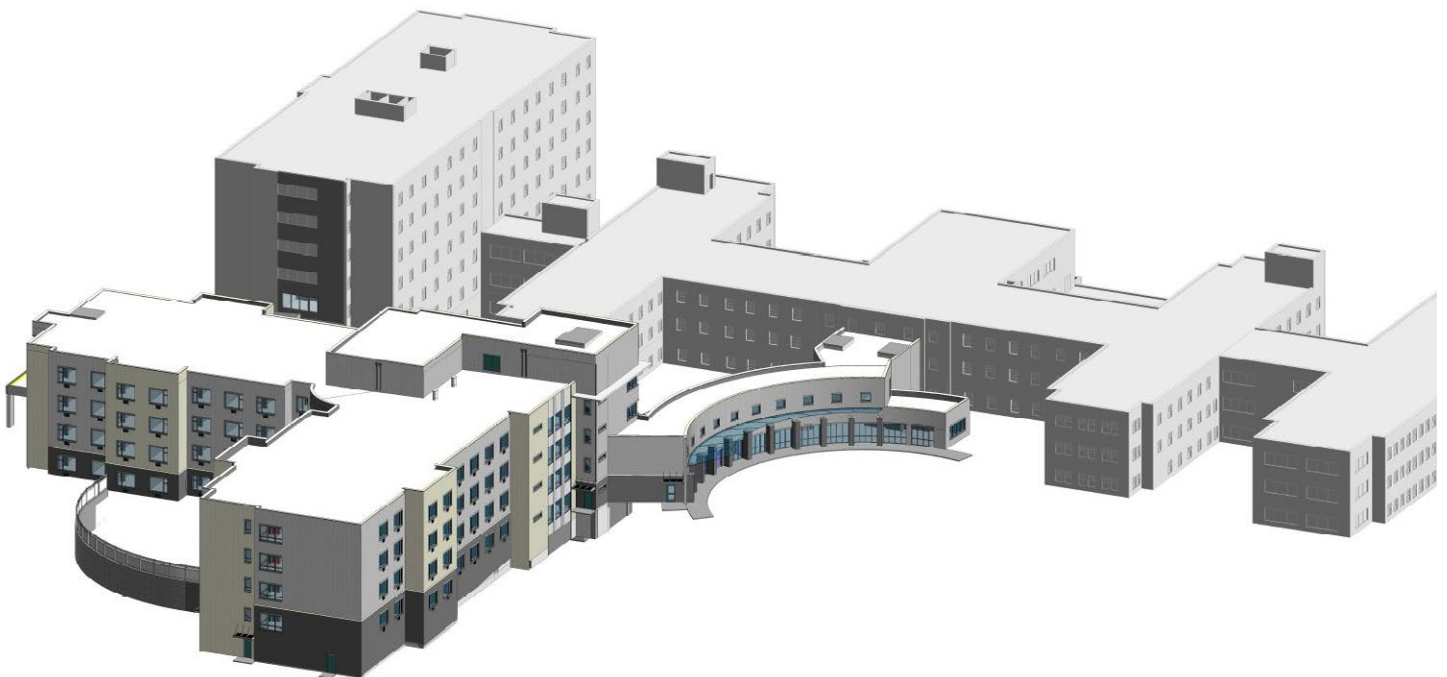
Cedarbrook Senior Care and Rehab: E-Wing Expansion

The large Cedarbrook Allentown E-wing renovation project, which is the replacement of the oldest wings at Cedarbrook with a modern 240 bed wing with better amenities and a higher quality of life for the residents has moved from the complicated site-work phase, to the building phase with the recent demolition of the front entrance and the digging of the footprint of the new wing. It is a very difficult project to manage on a 178-year-old, fully operational, and busy nursing home campus. With massive amounts of coordination and tight management, the project continues to move forward with a projected 2024 opening.

We are excited that the state increased the Medical Assistance rate by 17.5% starting in 2023. This will assist the county to responsibly manage the Cedarbrook financials during a time period of elevated labor and supply costs.

Despite the immense difficulties of the pandemic and national labor market crisis, Cedarbrook continues to operate at a level of quality deemed by Centers for Medicare and Medicaid Services to be a four star rated facility.

Cedarbrook Fountain Hill also continues to be a valuable asset for the county in caring for our elderly citizens in the eastern part of the county.





CHRISTMAN'S SEPTIC SERVICE

FOGELSVILLE, PA

www.christmanseptic.com

Call Us at **610-285-2563**
for all of your septic related services!

Lehigh County Residents

Receive **\$15.00 off** Pumping
with this coupon

Cannot be used with any other discounts.

HIC #PA017760



CEDAR CREST COLLEGE

Exceptional undergraduate programs for women
cedarcrest.edu

Flexible undergraduate and graduate programs
for adult women and men
cedarcrest.edu/sage

Making CONNECTIONS that matter

SINCE 1948



CELEBRATING
SERVICE 75 ELECTRIC
YEARS

CABLE TV & COMMUNICATIONS

Fast, Reliable Internet ■ Whole-Home WiFi ■ HD Cable TV ■ Digital Phone Service

Community Outreach Day: Office of the Public Defender

Created by Chief Public defender Kimberly Makoul, Esq., the purpose of Community Outreach Day is to implement a true holistic defense model to Lehigh County's clients and to build a stronger presence in the community. The free event provides a variety of outreach services for struggling residents which includes, but not limited to, free clothing, free hygiene kits, free food to take home, and information and resources on sealing criminal records, expungements, and pardons. Hundreds of Lehigh County residents have benefited from Community Outreach Day since its first event on June 5th, 2021.

Organizations from throughout the Lehigh Valley also come out to provide resources regarding career services, health services, education opportunities, and more.

There will be another Community Outreach Day held on June 10th, 2023.



Department of Corrections New programs & Updates



In 2022, we started a new program called the Community Corrections Supervision program. This program places qualifying and appropriate inmates back in the community, living in their approved residence so they can work, support their family and are monitored by an ankle bracelet (GPS system). The jail has engaged with several community providers and resources to expand and enhance the programming offered to the population.

We have also partnered with Muhlenberg college for the Inside Out program where outside Muhlenberg students and inside students engage in a college classroom setting, within the jail, to study and discuss Social Justice issues.

Pinebrook Family Answers continues to provide the Leaving Jail for Women services inside and provides support services for the women when they leave the jail.

We have engaged with the Lehigh Valley Work Force Board to provide employment services in the jail to prepare participants for the current job market and link them to employers in the community upon release.

The Center for Humanistic Change will be facilitating programs annually in two primary areas. Life skills to develop the basic skills necessary to help clients live healthy, fulfilling lives and reduce substance abuse. The classes offered are anger management, interpersonal skills, making decisions and release and reintegration.

The second primary area is parenting skills which enables clients to deal with the challenges of parenting within the context of incarceration, and provides parents the skills and strategies needed for positive engagement with their children, families and community after release.



WE'RE ALWAYS ON DISPLAY. VISIT OUR 24/7 DISPLAY YARD TODAY

American Fence & Flag ★ Since 1983

PRO INSTALLATION & DIY MATERIALS
LARGE IN-STOCK INVENTORY

PORCH, DECK & STAIR RAILINGS ★ FENCES, FLAGS & FLAGPOLES

610.437.1944 | 2738 EBERHART RD., WHITEHALL

AMERICAN-FENCE.COM



The Neffs National Bank
A Subsidiary of Neffs Bancorp, Inc.
STRENGTH. TRUST. COMMUNITY.

Serving our *Local Community* for 100 years

Offering a variety of products and services to meet your banking needs.

- Free Checking Account
- Business Plus Checking Account
- Interest Bearing Checking Account
- Savings Account
- Money Market Demand Account
- Certificates of Deposit & IRA
- Consumer Lending
- Commercial Lending
- Online/Mobile Banking
- VISA® Debit Card
- VISA® Credit Card
- & So much more!

Two convenient locations in Neffs and Walnutport.

 neffsnatl.com 610.767.3875 

RESIDENTIAL • COMMERCIAL

BURKHOLDER'S Heating & Air Conditioning, Inc. Quality Since 1960

24-Hour Emergency Service
610-816-6889
www.burkholders-hvac.com

HVAC Install & Service
Financing Available
Maintenance Plans

Generators Install & Service
Free Residential Estimates
Sheet Metal Fabrication

Geothermal HVAC
Building Automation Systems
Indoor Air Quality

\$25 OFF

Residential Service Repair

Residential use only. Cannot be applied to diagnostic fee. One offer per household; not valid with other offers. Coupon must be presented at time of service. Code: MACUNGIEB. Expires 12/31/2023.

FREE Air Purifier

with New Ducted System Installation

Valued at \$500.00

Residential use only. One offer per household; not valid with any other offer. Only valid on proposals signed and dated after 7/1/2023. Coupon must be presented at time of service. Code: MACUNGIEB. Expires 12/31/2023.

\$25 OFF

New Residential Maintenance Agreement

Residential use only. Offer does not apply to contract renewals and excludes humidifiers and media filters. One offer per household; not valid with other offers. Coupon must be presented at time of service. Code: MACUNGIEB. Expires 12/31/2023.

383 Minor Street, Emmaus PA 18049 PA 11533

Firefighter Tax Rebate

Because the County of Lehigh acknowledges the value and the absence of any public cost for volunteer fire protection, we will be providing a real estate tax credit for active Lehigh County volunteer firefighters residing in Lehigh County.



The Lehigh County Weekly Webcast



The Lehigh County Weekly Webcasts serve as the County Executive's direct connection with the community. Each week, either from his office or from another location in the county, Mr. Armstrong seeks to highlight businesses, organizations, and individuals doing great work to better our communities. As well as share any news or updates that impact the county at large.

Have an idea for a Weekly Webcast? Contact our Community Liaison, Yorman DeLaRosa at YormanDeLaRosa@lehighcounty.org to submit your request!

Follow Lehigh County on social media for the latest in Lehigh County news, updates, and events!

 [Facebook.com/CountyofLehigh](https://www.facebook.com/CountyofLehigh)

 [Twitter.com/CountyofLehigh](https://twitter.com/CountyofLehigh)

 [Instagram.com/lehighcounty_official](https://www.instagram.com/lehighcounty_official)



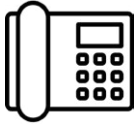
HANNAH KAHN
ALLENTOWN, PA

TRAINING THE FUTURE OF MEDICINE AT THE LEHIGH VALLEY'S **FIRST AND ONLY MEDICAL SCHOOL.**

Not only was Hannah Kahn born and raised in the Lehigh Valley – she also began her career in health care here. After graduating from Salisbury High School and Penn State University, Hannah worked as a technician in the St. Luke's Allentown Emergency Department before beginning her education at the Lehigh Valley's first and only medical school. Now in her second year at Temple/St. Luke's, she is learning from supportive faculty in an environment she knows. When you train at a 100 Top Teaching Hospital, the possibilities are endless.

sluhn.org/SOM





"Who should I call?" Department Directory



Assessment Office 610-782-3038

This office is responsible for property assessments.

Cedarbrook Nursing Homes 610-395-3727

Clerk of Judicial Records

- Civil Division: 610-782-3148. The Civil Division maintains all civil related court records.

- Criminal Division: 610-782-3077. The Criminal Division maintains all criminal related court records.

Court Administration 610-782-3014

The responsibility of the District Court Administrator is to manage the non-judicial functions of the court. Judges are ultimately responsible for effective court management.

Register of Wills 610-782-3170

The primary responsibility of this office includes the probate of estates and to act as an agent for the Commonwealth of Pennsylvania in the collection of inheritance taxes.

Recorder of Deeds 610-782-3162

The Recorder of Deeds Division maintains land records of property located in Lehigh County.

Commissioners 610-782-3050

The Board of Commissioners is the legislative branch of county government and has all the legislative powers that may be exercised by the county under the constitution, the laws of the Commonwealth of Pennsylvania and the Lehigh County Home Rule Charter.

Community and Economic Development 610-782-3565

Controller 610-782-3082

The Controller and the highly qualified team of professionals are responsible for monitoring county finances, investigating campaign finance violations and serving as the fiscal watchdog for your county tax dollars.

Coroner 610-782-3426

The Office of the Coroner is an independent office that investigates and documents the facts and circumstances surrounding deaths over which the Coroner's Office has jurisdiction.

Department of Law and Right to Know 610-782-3180

The Department of Law is a full-service legal office providing advice and representation to all three branches of county government.

District Attorney 610-782-3100

The District Attorney's office is charged with seeking justice, deciding when criminal charges will be filed, and fairly and efficiently prosecuting individuals charged with committing felonies and misdemeanors in Lehigh County.

Executive Office-Administration 610-782-3001

Runs the day to day operations of the Government Center.

Fiscal/Tax Claims/ Gaming & Dog Licenses 610-782-3115

General Services 610-782-3033

The General Services Office provides management and coordination for the internal service and maintenance functions for Lehigh County

facilities as well as public services related to Parks & Recreation, Bridge Maintenance, and Emergency Management.

Human Resources 610-782-3130

The Office of Human Resources is responsible for personnel and risk management along with employee training.

Human Services Administrative Office 610-782-3952

The mission of this department is to assist individuals and families in becoming self-sufficient and overall improve the quality of life within our communities.

Information & Referral 610-782-3200

Provides information about Lehigh County Department of Human Services and information about community resources.

Jail 610-782-3270.

Emergency Telephone Numbers

- Aging and Adult Services: 610-782-3034.

- Children and Youth: 610-782-3064.

- Crisis Intervention: 610-782-3127.

- Drug & Alcohol: 610-782-3555.

- Early Intervention: 610-782-3125.

- Mental Health: 610-782-3135.

- Intellectual Disabilities: 610-782-3126.

- Veteran's Affairs: 610-782-3295.

Parks and Recreation 610-871-0281

Responsible for the development, management, and maintenance of over 4,000 acres of county park land and open space.

Public Defender 610-782-3157

Represents eligible individuals and strives to meet the needs of their clients to protect their civil liberties under both the United States and the Pennsylvania Constitutions.

Procurement 610-782-3030

The Office of Procurement, under the direction of the Department of Administration, is empowered with administering centralized purchase of all construction services, equipment, furniture, materials, nonprofessional services and supplies at the lowest possible cost, consistent with the quality needed for proper and effective operation of all county departments.

Sheriff's Office 610-782-3175

The Office of the Sheriff serves all original civil, criminal and protection from abuse documents issued by the Court of Common Pleas. The office also provides security for the county's courtrooms, judges, and buildings. In addition, the Sheriff's Office issues permits to carry a concealed weapon within the Commonwealth of Pennsylvania.

Solid Waste Management 610-782-3073

Responsible for ensuring that the county is in compliance with the Lehigh County Solid Waste Management Plan.

Voter Registration/ Board of Elections 610-782-3194



*For all your Insurance needs.
Call today for a free quote!*

E.F. Butz Agency

HOME | LIFE | AUTO | COMMERCIAL

3333 W Emmaus Avenue | Emmaus PA
610 965-2824 | efbutzins.com | efbutzins@rcn.com

**NONSTOP DESTINATION
ROUTE MAP**

allegiant

- 1 Fort Lauderdale/Hollywood (FLL)
- 2 Myrtle Beach (MYR)
- 3 Nashville (BNA)
- 4 Orlando Sanford (SFB)
- 5 Punta Gorda (PGD)
- 6 Sarasota/Bradenton (SRQ)
- 7 Savannah/Hilton Head (SAV)
- 8 St. Pete/Clearwater (PIE)

American Airlines

- 9 Charlotte (CLT)
- 10 Chicago O'Hare (ORD)
- 11 Philadelphia (PHL)

DELTA

- 12 Atlanta (ATL)

UNITED

- 13 Chicago O'Hare (ORD)
- 14 Newark (EWR)



FLYABE.COM

**Cornerstone
LIVING**

**Memory Care
Community**

610-298-3300

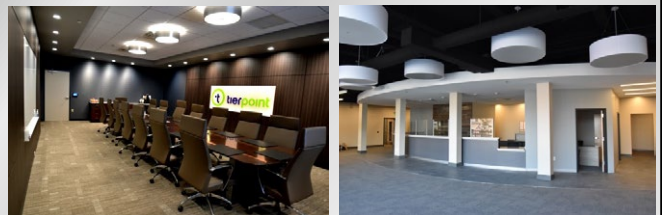
4605 Werleys Corner Rd • New Tripoli, PA 18066
www.cornerstonelivingpa.com



**ONDRA-HUYETT
ASSOCIATES, INC.**

Managers & Builders

Commercial | Data Centers & Mission Critical Facilities
Industrial & Manufacturing | Mixed-Use | Religious
Healthcare | Hospitality & Resorts | Educational



Delivering Construction Services since 1995

7584 Morris Court, Suite 210 | Allentown, PA 18106

ohainc.com

610-366-1709

The Genuine. The Original.



Overhead Door Company of Allentown™

Residential and Commercial Sectional Doors
Service and Maintenance
Loading Dock Equipment
Rolling Steel Doors

610-262-3530

visit us at www.OHDAllentown.com



Smart Garage Doors



*Customize doors

Servicing the Lehigh Valley since 1962



Become a Member of our
Growing Family

For a Quick Quote
text 484-2-Insure



D.E. Cressman

INSURANCE AGENCY INC.

2310 Walbert Ave.
Allentown, PA

AUTO • HOME • LIFE • COMMERCIAL

610-433-1568 • www.ChooseCressman.com



New Tripoli Bank

Because people are more valuable than money.

www.newtripolibank.net



- ◆ Free Personal & Business Checking Accounts*
- ◆ Mobile Banking
- ◆ Statement Savings & Money Market Accounts
- ◆ Certificates of Deposit
- ◆ IRA Savings Account
- ◆ First Time Home Buyer Program
- ◆ Mortgages & Home Equity Lines of Credit

* No monthly service charge, no monthly minimum balance requirement, no per-check charges, unlimited check writing!

6748 MADISON STREET
NEW TRIPOLI, PA 18066
610-298-8811

7747 CLAUSVILLE ROAD
OREFIELD, PA 18069
610-395-8834

4892 BUCKEYE ROAD
EMMAUS, PA 18049
610-421-4001

Welcome to the Lehigh Valley's Premier Workforce System



PA CareerLink® Lehigh Valley | Comprehensive Center

555 Union Boulevard | Allentown, PA
18109 Phone: 610-437-5627
Monday-Friday: 7:30 AM - 4:00 PM

PA CareerLink® Lehigh Valley will help you in the next step of your career. Whether you are looking for your first job, a change in career, or advancement in your career, we can help! PA CareerLink® staff can provide you with industry expertise as you research job opportunities through PA CareerLink® Lehigh Valley and Pennsylvania's user-friendly online job matching system. You can meet with local employers at over 200 annual on-site recruitment events to network and get hired! We want to help you get started with your job search right now. Visit our Welcome Center for a personalized orientation to all of the services and employment opportunities available to you. Visit a location near you!

PA CareerLink® Lehigh Valley SATELLITE LOCATIONS:



LVCC Donley Center

718 Hamilton Street
Allentown, PA 18101
Phone: 610-799-1205
Thurs.: 9:00 AM-3:00 PM



St. Luke's Sacred Heart Campus

325 North 5th Street
Allentown, PA 18102
Phone: 610-440-4430
Mon. - Fri.: 8:00 AM-4:00 PM



JOB SEEKERS

Workforce Resource Center	Individualized Help
Introduction to Services	Veteran's Services
Computer/Internet Access	Job and Labor Market Data
Skills/Interest Assessments	Job Recruiters and Job Leads
Career Exploration	Recruitment/Job Fairs
Resumes/Job Applications	Education and Training Options
Job Search Navigators	Community Partner Services

EMPLOYERS

Intermediary Services	Training Resources
Workforce Intelligence	Community Connections
Human Resources	Sector Strategies
Recruiting/Screening	Apprenticeships
Candidate Referrals	Work Experience
Specialized Job Fairs	Internships
Interviewing Space	Rapid Response Services

Need Help? Visit www.pacareerlink.pa.gov or call 610-437-5627

A proud partner of the  American Job Center network

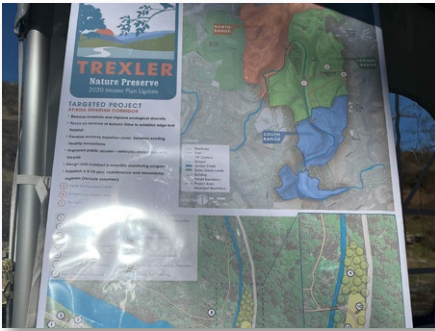
Auxiliary Aids and services are available upon request for individuals with disabilities. Equal Opportunity Employer/Program
Visit <https://lvwib.org/equal-opportunity-and-adaptive-equipment/> for a full list of Equal Opportunity information and our Adaptive Equipment and Programs at PA CareerLink®.
Programs at PA CareerLink® Lehigh Valley are funded in whole or in part by federal funds. Detailed information can be found at lvwib.org/stevens-amendment/.

Trexler Nature Preserve Mountain Bike Trail Grand Opening



On Friday, December 9th 2022, Lehigh County held a ribbon cutting for the new “Jack O’ Diamonds” mountain bike trail in the Trexler Nature Preserve.

With the assistance of our partners, Trexler Trust, Wildlands Conservancy, Pennsylvania Department of Conservation & Natural Resources, Lehigh Valley Mountain Bikers, and Pennsylvania Game Commission, Lehigh County was thrilled to announce this grand opening.



The Master Site plan’s purpose was to assess the accomplishments of the 2006 master plan, identify new and existing challenges, increase our understanding of how the preserve is used, and develop recommendations. It was important to enhance the users experience, as well as to protect and enhance the ecological health and diversity of the preserve.

The new trail was designed and installed by nationally recognized park builders, Dirtsculpt. To provide additional thrill, the trial was programmed as a Black Diamond rated trail that



will challenge expert riders with jumps and challenging turns. Less experienced riders can also ride the trail and select designed options to maneuver around the aggressive challenges.

Farmland Preservation Update



Lehigh County’s Department of Farmland Preservation achieved a new milestone and exceeded 27,000 acres of farmland preservation this year. Over 100 farms were evaluated to meet preservation requirements, and the recent updates to our Farmland Preservation Program were approved by the Commonwealth of Pennsylvania.

Why Preserve Farmland?

1. Farmland is a rapidly disappearing natural resource.

According to the American Farmland Trust, the United States is losing forty acres of farm and ranch land every hour to new development. Since 1982, America has converted 24 million acres of agricultural land to developed uses. This is roughly the size of Indiana and Rhode Island combined.

2. Local farms provide fresh food at a reasonable cost.

Locally produced food is more nutritious, less costly and supports the local economy. Transportation and environmental costs are high for foods that are imported from distant regions and other countries, consuming large quantities of fossil fuels.

3. Preserved farmland protects local scenery and promotes local tourism.

Seeing open farmland soothes the mind and soul. Local scenic landscapes are important for attracting visitors and for keeping the quality of life high for local citizens.

4. Local farm businesses support farms and farm-related jobs.

Agriculture is one of the leading industries in Pennsylvania. According to the 2012 Ag Census, Lehigh County had a market value of \$90,833,000 for agricultural products. One out of every 5 jobs in Pennsylvania is agriculturally related. Productive farms employ managers, farm laborers, accountants, feed & fertilizer consultants, veterinarians and agricultural equipment suppliers. Farms also provide the raw materials for food processing plants, restaurants and grocery stores.

5. Locally protected farms benefit the environment.

The American Farmland Trust estimates nearly 1.7 billion tons of topsoil are lost each year. Preserved farm properties are managed by private landowners using sound soil and water conservation practices that protect the soil from erosion and local surface waters from contamination. By keeping soils healthy through conservation practices, the effects of greenhouse gas emissions and climate change can be offset. Open farm and lands are important for the recharge of ground water in our communities. Farms also provide critical habitat for local wildlife populations, promoting and protecting biodiversity.

STARRING CLEAN HARRY AND YOU?



NOW HIRING

IN A
WORLD
FULL OF
DIRTBAGS,
THE ONE
COMPANY
THAT CAN
TAKE OUT
THE FILTH

SERVICEMASTER OF ALLENTOWN

LEGEND IN RESIDENTIAL, COMMERCIAL AND JANITORIAL CLEANING

610.965.6058



LEADING THE CLEAN SINCE JUNE, 1967
TO A HOME OR BUSINESS
NEAR YOU
COMING SOON!

DAVID M. BACKENSTOE ATTORNEY AT LAW



148 Main St, Hellertown, PA 18055

(610) 838-2255 Fax: 610-838-2244

Powered by integrity.



610.866.1076

PA010621 • NJ18491



"The Hot Dog King"
Yocco's
THE SECRET'S in
Yocco's SAUCE

100
YEAR
Anniversary
1922 - 2022

A Local Tradition Since 1922!

@YoccasHotDogs   

Yoccas.com for
Menu and Locations

Recycling and Hazardous Waste Program

What is Household Hazardous Waste (HHW)?

Household Hazardous Waste is any household product that is labeled “CAUTION DANGER FLAMMABLE CONBUSTABLE TOXIC WARNING CORROSIVE EXPLOSIVE POISON VOLATILE” or a combination of these characteristics. Look for a



warning or skull and crossbones on label. Use this list to identify and collect hazardous products that are no longer usable or wanted. Select a product suited for the job at hand but buy only what you can use entirely.

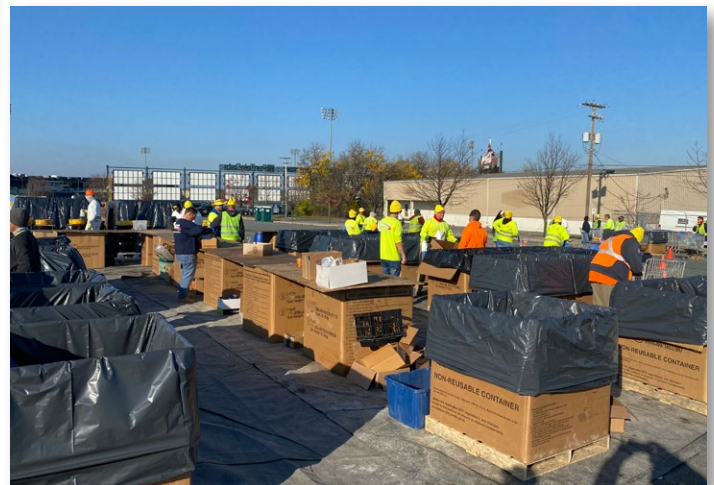
In most cases, HHW is extremely expensive to dispose of. An example of an acceptable HHW material is oil-based paint. On the other hand, latex paint is not hazardous and therefore not acceptable for disposal as HHW. The average American has between 3 and 10 pounds of hazardous materials in their home at any given time.



Pennsylvanians generate an average of 25,000 tons of Household Hazardous Waste each year!

In an effort to meet the growing disposal needs of our residents while maintaining the quality of life that our residents have come to expect and deserve, the County of Lehigh will be sponsoring a Household Hazardous Waste (HHW) Collection Event this coming fall.

The best way for us to protect tax dollars and to ensure that this event is reserved for Lehigh County residential use only is for participants to pre-register for this event online at www.lehighcounty.org. The link for this event will be available on our website as we get closer to the event itself. By following the link and inputting the required information, this process automatically verifies Lehigh County residency, and at the same time serves to keep people from surrounding counties from transporting their HHW to Lehigh County for disposal at the Lehigh County taxpayers



expense. The mandatory pre-registration link should be available right on the front page of our website by mid-summer of 2023.

Along with verifying residency, the pre-registration process serves Lehigh County residents by allowing them to select a convenient timeslot to attend. These timeslots range from 8:00 AM until 3:00 PM and are first come first serve. In addition, by going to the county’s website for this information, residents will be provided with additional lists of materials that are acceptable to bring in, also the volumes acceptable, and what materials are not acceptable for disposal through this program.

We look forward to seeing our residents at this successful event!

PERSONAL & MEMORY CARE



HEATHER GLEN
SENIOR LIVING

24/7 Care For Your Loved Ones • Residential Feel
Unique Neighborhood Design • Daily Activities
Locally Owned & Operated!

www.HGSeniorLiving.com 610-841-4478

415 Blue Barn Road, Allentown

Electronic Waste (E-Waste) Recycling in Lehigh County

Here in Lehigh County our residents have a couple of options for the recycling of their electronic waste (E-waste.) Firstly, many of our municipalities run one-day collection events for their individual residents. Most of them charge just enough to cover the cost of recycling those electronics. If your municipality does not offer one of these collection events, you can take your E-waste to one of the following:



- GER Solutions located at 635 S. 10th Street Unit 600, Allentown, PA 18103, call 610-443-1776 for pricing and times of operation.
- DRC Technologies located at 2005 Main St., Northampton, PA 18067, call 610-502-0854 for pricing and times of operation.

By Lehigh County offering E-Waste recycling this way, you do not have to wait for a one-day event. While these companies do charge a fee for you to drop off most of what they collect, it is just to cover their cost.

Rather than residents only being able to dispose of these items during one day events just once or twice a year as is the case across most of the state, we have these certified and/or approved electronics recyclers operating locally. They are doing business on a continual basis throughout the year.



Local Commitment, Global Scale

Reliability at the Ready

PROVIDING A BETTER BRAND OF SECURITY OFFICER



Signal of Eastern PA
TeamSignal.com → 800.695.0607



Meals on Wheels is more than a meal. It's an opportunity to support members of our community.

For over 50 years, we have been serving the Lehigh Valley through meals, daily wellness checks, social interaction, delivery of food bank and senior food boxes, and pet food deliveries. Our mission is to support people just like you!

We look forward to serving you.



@mealsonwheelsglv



Meals on Wheels of The Greater Lehigh Valley



Meals on Wheels of The Greater Lehigh Valley



SCAN ME TO LEARN MORE!

1302 N Sherman St
Allentown, PA 18109
(610) 691-1030
www.mowglv.com

A.F. Boyer Hardware & Guns

Serving the Valley for over 155 years!

BUY, SELL, TRADE!

**Largest firearms dealer
in Lehigh County**

Huge selection of hardware-
plumbing, electrical, key cutting.

Lehigh county dog
license agent

Live bait, fishing
license agent

610-767-3162

130 Main St, Slatington, PA 18080
afboyer1868@gmail.com

Your trusted real estate advisor



Amanda Forsthoefel
REALTOR® ABR, SRS, PSA

Whether you're looking to buy or sell your home, Amanda is an award winning Realtor and relocation specialist with a proven track record. Amanda is ready to help with your real estate needs in Lehigh, Northampton and Bucks Counties.

O: 610-398-9888

C: 267-374-6444

www.amandaforsthoefel.com
Amanda.Forsthoefel@foxroach.com

6081 Hamilton Blvd, Suite 102
Allentown PA 18106

**BERKSHIRE
HATHAWAY**
HOMESERVICES

**FOX & ROACH,
REALTORS®**



WM Is Now Hiring CDL Drivers And Technicians In PA

Thank you for trusting WM with your waste and recycling collection services. It has been our pleasure to serve Lehigh Valley communities for many years.

Up to \$3,000 Bonus for Technicians
Great Pay
3 Weeks PTO
100% Tuition Coverage
People First Culture
#WeAreWM

Start your tomorrow today
CAREERS.WM.COM
We would love to have you join our Team.

Equal Opportunity Employer:
Minority | Female | Disability | Veteran



Bachman Fuel LLC

New Tripoli
610-657-3124

Heating Oil
On-Road & Off-Road Diesel
Kerosene

Concord Public Finance



*Independent Registered Municipal Advisors
Serving Local Governments, Municipal Authorities,
School Districts and Non-Profit Entities
Since 1997*

Financial Advisory Services Include:

- CAPITAL PROJECT FINANCINGS
- DEBT REFINANCINGS
- BANK LOAN FINANCINGS
- BOND ISSUE FINANCINGS
- FINANCING NEEDS ANALYSIS
- OTHER RELATED SERVICES

Visit us at www.concordpublicfinance.com

Or contact us at:

CONCORD PUBLIC FINANCIAL ADVISORS, INC.

30 Commerce Drive, Suite 1
Reading, PA 19610
Phone: (610) 376-4100

2938 Columbia Avenue, Suite 1002
Lancaster, PA 17603
Phone: (717) 295-2300

Good Shepherd Rehabilitation

New possibilities for patients.
New opportunities for you.
Lead the way to revolutionary recovery.

FOR GROUNDBREAKERS

NEW HOSPITAL NOW HIRING
Join our team at forgroundbreakers.com

Good Shepherd Rehabilitation

NOW IN CENTER VALLEY

Love Life

When you make Fellowship Personal Care your home

- Enjoy Friends
- Great Activities
- Chef Prepared Meals
- Med Management
- 24/365 Medical Staff
- Compassionate Care
- Spiritual Guidance
- On-site Rehabilitation

Fellowship
Community

610-769-8111
FellowshipCommunity.com



It's a Valley thing.

Join today at firstcomcu.org

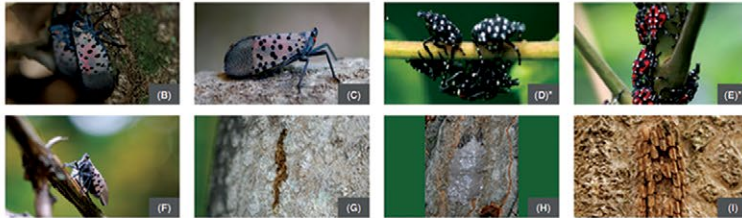
Pest Alert

Spotted Lanternfly



Lycorma delicatula (WHITE)
(Hemiptera: Fulgoridae)

The Spotted Lanternfly, *Lycorma delicatula* (White), an invasive planthopper, has been discovered in Berks County, Pennsylvania. It is native to China, India, Vietnam, and introduced to Korea where it has become a major pest. This insect attacks many hosts including grapes, apples, stone fruits, and tree of heaven and has the potential to greatly impact the grape, fruit tree, and logging industries. Early detection is vital for the protection of Pennsylvania businesses and agriculture.



(A) Spotted Lanternfly showing the fore and hind wings (B) Resting against bark (C) Lateral view (D) Early nymphs (E) Late nymphs (F) Feeding on wild *Vitis* sp. (G) Weeping sap trail on tree (H) Egg mass covered in waxy coating (I) Old hatched egg mass on a trunk.

*Photos courtesy of Park et al. 2009. Biological Characteristics of *Lycorma delicatula* and the Control Effects of Some Insecticides.

Identification:

The Spotted Lanternfly adult is approximately 1" long and 1/2" wide at rest. The forewing is grey with black spots and the wings tips are reticulated black blocks outlined in grey (A, B, C). The hind wings have contrasting patches of red and black with a white band (A). The legs and head are black; the abdomen is yellow with broad black bands. Immature stages are black with white spots, and develop red patches as they grow (D,E).

Signs and Symptoms:

Trees, such as tree of heaven and willow, will develop weeping wounds. These wounds will leave a greyish or black trail along the trunk (G). This sap will attract other insects to feed, notably wasps and ants. In late fall, adults will lay egg masses on host trees and nearby smooth surfaces like stone, outdoor furniture, vehicles, and structures. Newly laid egg masses have a grey mud-like covering which can take on a dry cracked appearance over time (H). Old egg masses appear as rows of 30-50 brownish seed-like deposits in 4-7 columns on the trunk, roughly an inch long (I).

What to do:

If you see egg masses, scrape them off, double bag them and throw them away. You can also place the eggs into alcohol or hand sanitizer to kill them. Please report all destroyed egg masses on our website listed above.

Collect a specimen: Specimens of any life state can be turned into the Pennsylvania Department of Agriculture's Entomology lab for verification.

Take a picture: A photograph of any life state (including egg masses) can be submitted to Badbug@pa.gov.

Report a site: If you can't take a specimen or photograph, call the Automated Invasive Species Report Line at 1-866-253-7189 and leave a message detailing your sighting and contact information.

For up to date information, visit: www.pda.state.pa.us/spottedlanternfly



69 WFMZ-TV NOW STREAMING



DOWNLOAD WFMZ+
FREE ON YOUR
PHONE, TABLET, OR
CONNECTED TV



Roku  **tv** 
Samsung  **SMART TV**





County of Lehigh
 17 South Seventh Street
 Allentown, PA 18101-2401

PRSRT STD
 U.S. Postage
 PAID
 Lehigh Valley, PA
 Permit #121

**** ECR WSS **
 Postal Customer



This Community Newsletter is produced for Lehigh County
 by Hometown Press (215) 257-1500 • All rights reserved*



To Place An Ad Call Mr. Kim Kriebel At Hometown Press 267-371-2833 or email: klk14htp@gmail.com

AWARD-WINNING INTERNET



14-TIME RECOGNIZED
 COMPANY-WIDE

Voted #1 cable Internet
 Service Provider Nationwide**

And, chosen top Internet Provider in the Lehigh Valley



SCAN CODE

1.800.4.ASTOUND
astound.com

Astound
 Broadband Powered by **RCN**

**A trademark of Ziff Davis, LLC. Used under license; Where available. Reprinted with permission. © 2022 Ziff Davis, LLC. All Rights Reserved. ©2023 RCN Telecom Services (Lehigh), LLC. All rights reserved.