



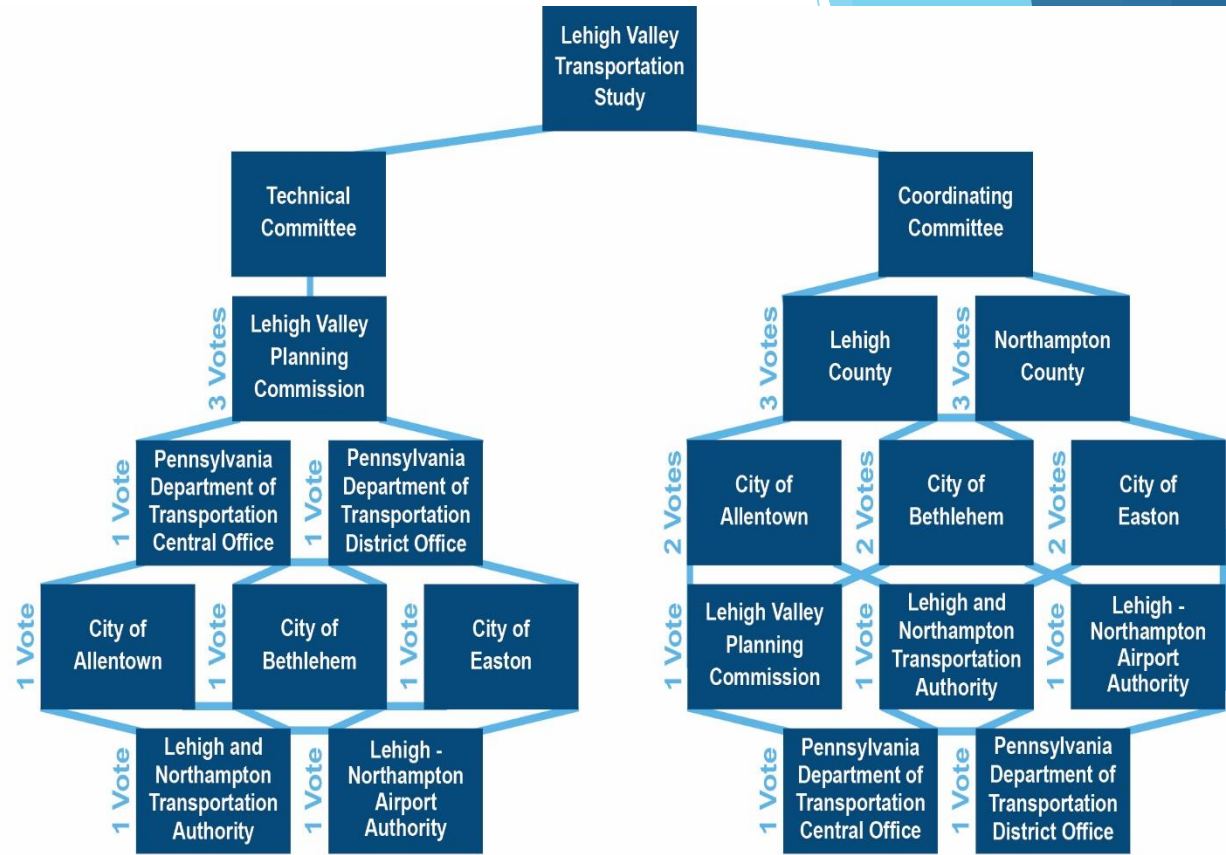
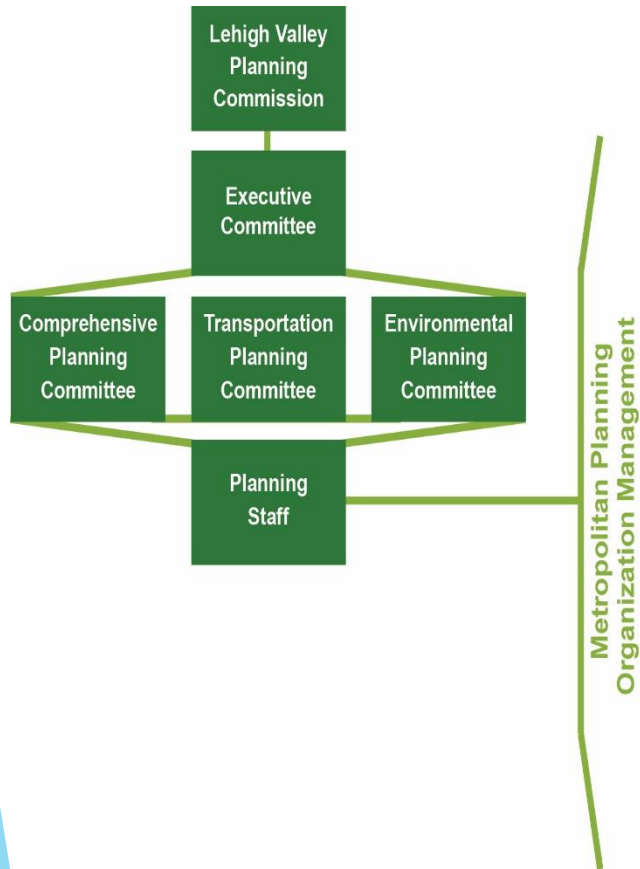
# MOVE LEHIGH VALLEY

May 28, 2015

**Becky A. Bradley, AICP**

Secretary, Lehigh Valley Transportation Study

Executive Director, Lehigh Valley Planning Commission



# What is the Lehigh Valley LRTP?

- ▶ Federally mandated
- ▶ Financially constrained Long Range Plan that identifies specific projects and line items, necessary for improving and enhancing the regional travel network
- ▶ Project list....Policy and data driven evaluation criteria
- ▶ Conduit for Transportation Improvement Plan (TIP)
- ▶ Identify options for non-qualifying projects
- ▶ New plan will advance mobility and partnerships
- ▶ Goals, policies, and performance standards

# Asset Management

## ▶ Road Inventory 2013

County	State / Turnpike / Federal Roadway Mileage	Local Roadway Mileage	Total Mileage
Lehigh	560.12	1,525.54	2,085.66
Northampton	499.53	1,520.48	2,020.01
<b>Total</b>	<b>1,059.65</b>	<b>3,046.02</b>	<b>4,105.67</b>

- 215 linear miles added to road network for the 10-year period ending in 2012
- 213 miles is local or municipal

# Asset Management

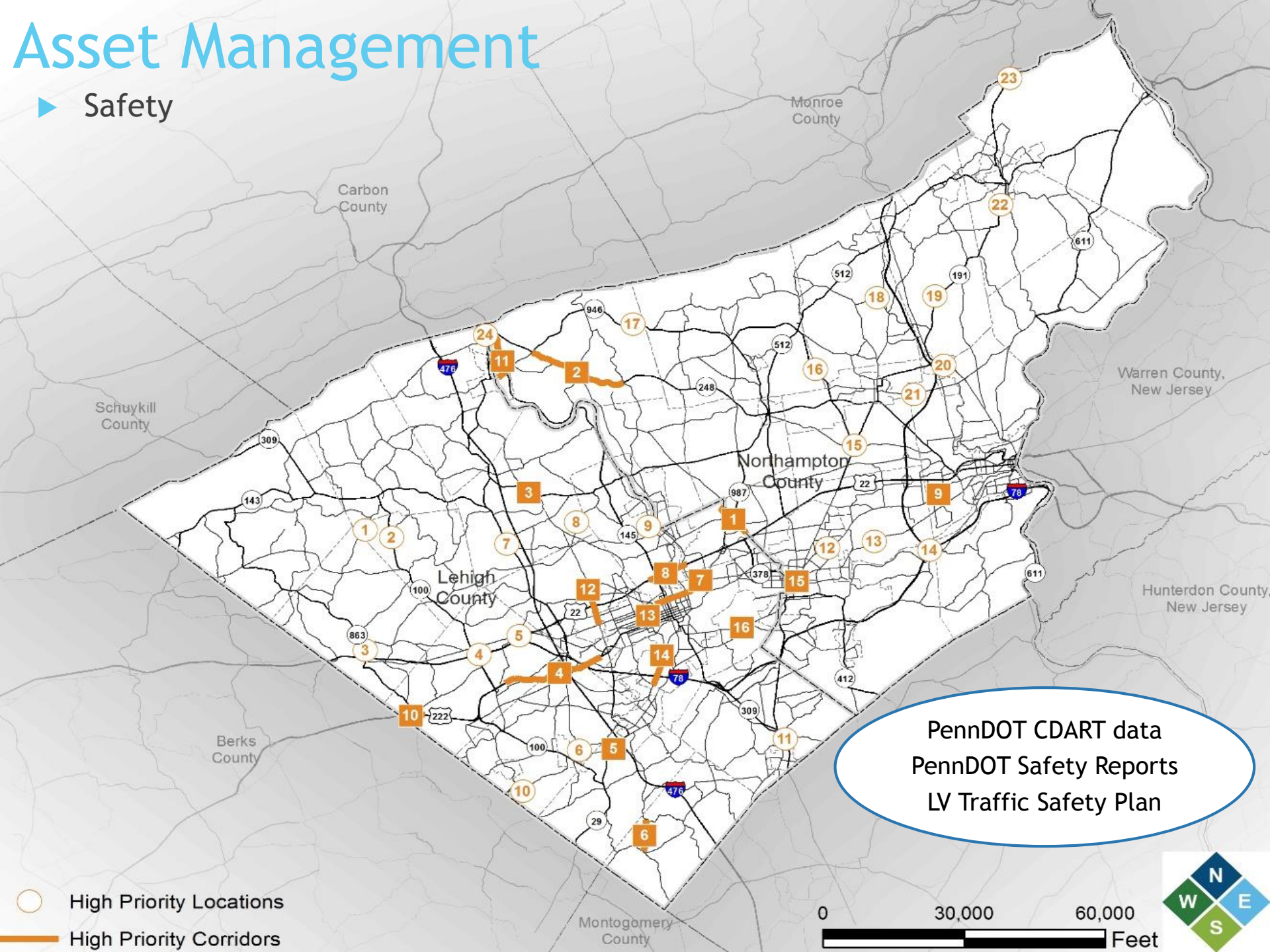
## ▶ Vehicle Miles Traveled 2013

County	DVMT (State / Turnpike Federal Roadways)	DVMT (Local Roadways)	Total DVMT
Lehigh	6,380,280	1,650,635	8,030,915
Northampton	4,434,648	1,197,731	5,662,970
<b>Total</b>	<b>10,814,928</b>	<b>2,848,366</b>	<b>13,693,885</b>

- Total DMVT for 2010 was 13,772,215
- 24 minute Lehigh County commute time
- 27 minute Northampton County commute time

# Asset Management

## ► Safety



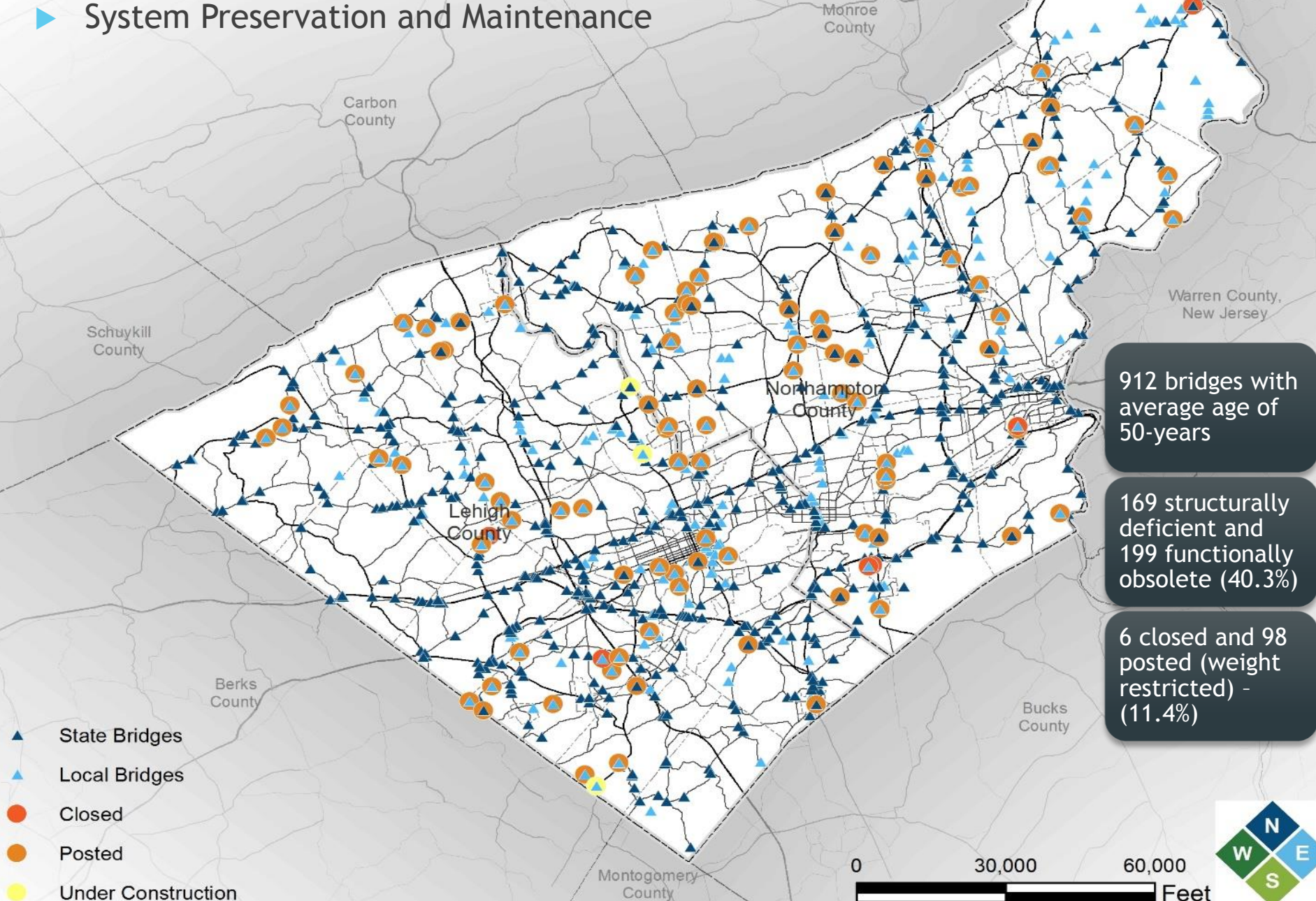
PennDOT CDART data  
PennDOT Safety Reports  
LV Traffic Safety Plan

- High Priority Locations
- High Priority Corridors



# Asset Management

## System Preservation and Maintenance



# Performance Standards

- ▶ County of Lehigh: 43 bridges, 16 are posted, one closed

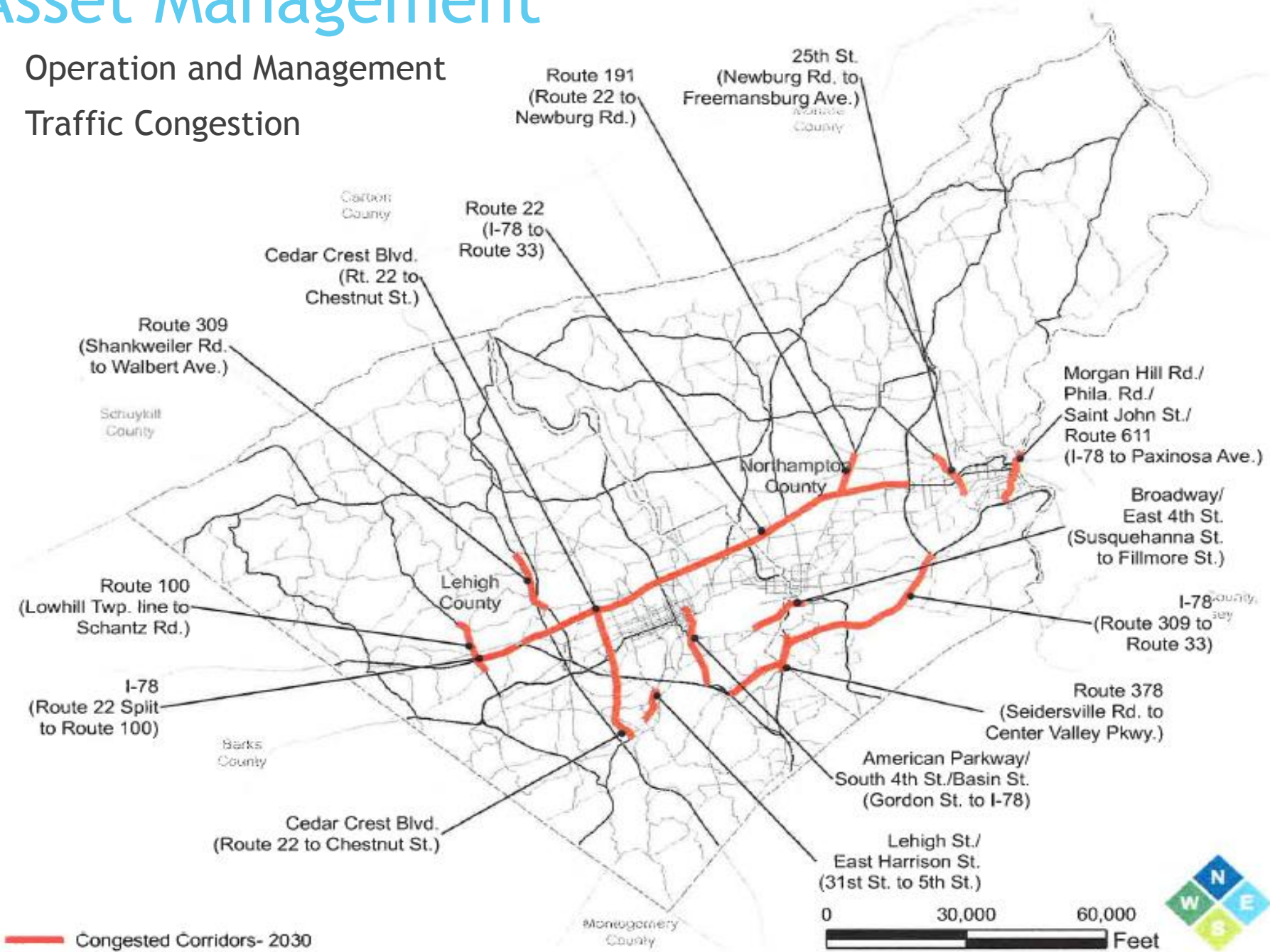
## Transportation Performance Indicators

<p><u>Bridges</u> Reduction in number of structurally deficient bridges</p>	<p>Baseline: 169 of 912 bridges are structurally deficient (2014)</p> <ul style="list-style-type: none"><li>• State Owned (Lehigh and Northampton): <b>96</b></li><li>• Locally Owned (Lehigh and Northampton): <b>73</b></li></ul> <p>Source: <u>PennDOT</u> Annual Bridge Performance Measures Report</p>
<p><u>Bridges</u> Reduction in number of posted bridges</p>	<p>Baseline: 98 of 912 bridges are weight restricted (posted) (2014)</p> <ul style="list-style-type: none"><li>• State Owned (Lehigh and Northampton): <b>26</b></li><li>• Locally Owned (Lehigh and Northampton): <b>72</b></li></ul> <p>Source: <u>PennDOT</u> Annual Bridge Performance Measures Report</p>



# Asset Management

- ▶ Operation and Management
- ▶ Traffic Congestion



# Municipal Project Presentations

## **87 Project Presentations (27 Removed)**

- 15 projects are eligible for competitive grant opportunity
- 8 projects are not on Federal Aid System and/or not eligible for funding
- 1 project to be completed by County maintenance with funds outside the program
- 1 project is in current TIP and 1 is in current LRTP
- 1 project will be forwarded to the Interstate TIP (I78 and Adams Road Interchange)

*The value of all removed projects was \$227,509,101 (3% inflation factor included)*

# Project List

- ▶ Fiscally Constrained Financial Analysis
- ▶ Evaluation of Projected Revenues with 3% Inflation Index
- ▶ Total Plan Revenues **\$2,500,514,500**
- ▶ Previous Plan Revenues **\$1,999,489,000**

2015 - 2018 TIP Short Range	%	2019 - 2026 Mid Range	2027 - 2040 Long Range	LRTP Projection
\$185,518,000	HW:49%	\$371,036,000	\$649,313,000	\$1,205,867,000
\$140,721,000	BR:37%	\$281,442,000	\$492,523,500	\$914,686,500
\$56,066,000	TR: 15%	\$112,132,000	\$196,231,000	\$364,429,000
\$382,305,000	100%	\$770,258,000	\$1,347,951,500	\$2,500,514,500

# Next Steps

- ▶ 30-day public comment period
- ▶ Presentation at Chamber Transportation Summit
- ▶ July 9 combined LVTS meeting for adoption